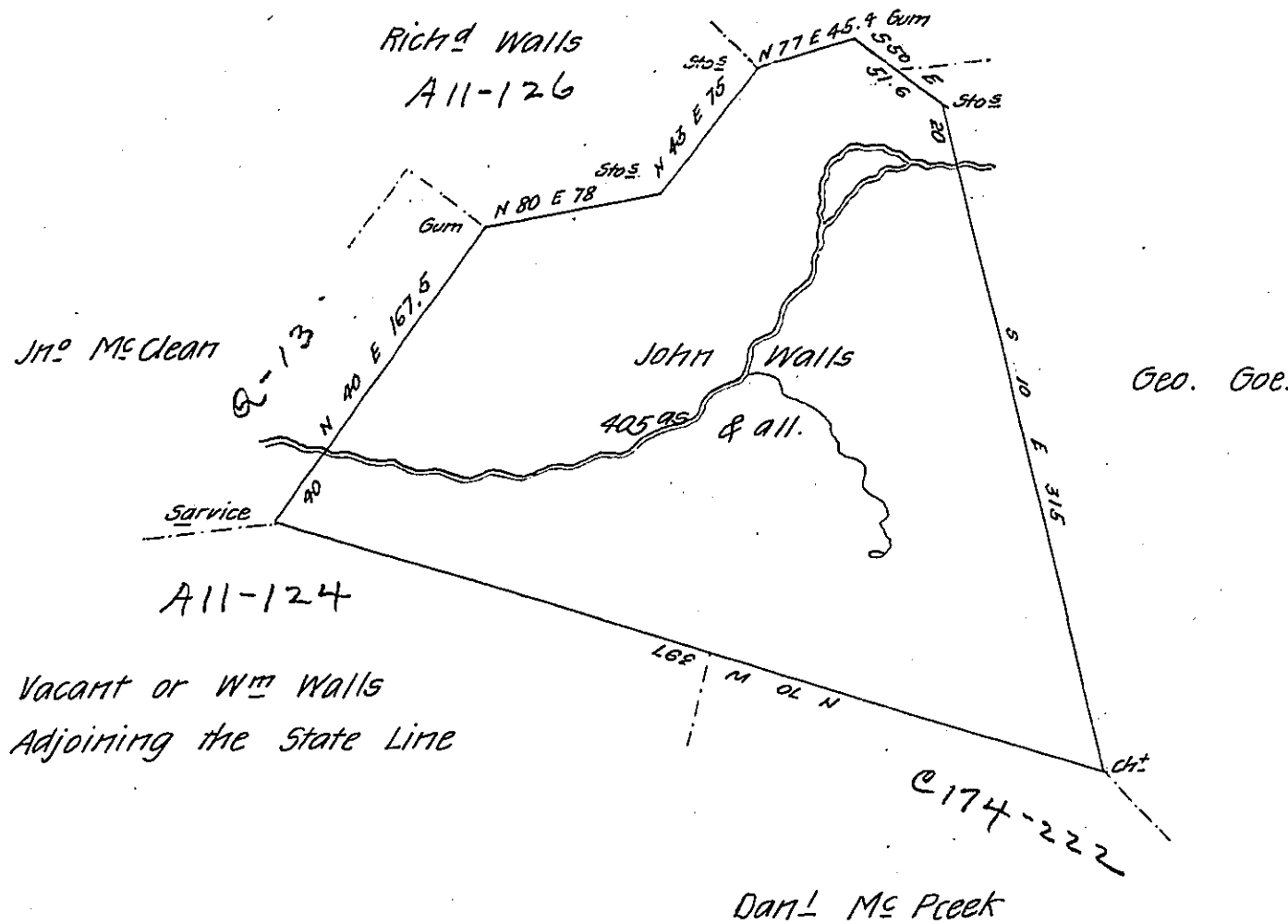


Ephm. Goe



Situate on the waters of Sandy Creek in Wharton Township Fayette County
 and Surveyed the 13th day of August 1835 in pursuance of a Warrant in the name
 of John Walls for 400^{as} dated the 10th day of February 1794

There is no improvement on this Land

F. Lewis D.S.

To Jacob Spangler Esquire

Surveyor General.

IN TESTIMONY that the above is a copy of the original remaining on file in
 the Department of Internal Affairs of Pennsylvania, made
 conformably to an Act of Assembly approved the 16th day of
 February, 1833, I have hereunto set my Hand and caused
 the Seal of said Department to be affixed at Harrisburg,
 this thirty first day of July 1907

Henry Howell
 Secretary of Internal Affairs.